

145

Task
 Project Guide: Critical Task
 Progress
 Milestone
 Summary
 Project Summary
 External Tasks
 External Milestone
 Deadline



ID	Task Name	Duration	Start	Finish	% Complete	Predecessors
96	Discharge pre-commencement	4 ws	Mon 09/09/13	Fri 04/10/13	0%	94,95FF
97	Mobilisation	4 ws	Mon 07/10/13	Fri 01/11/13	0%	96
98	Construction (possible alternative subject to Contractor)	15 mons	Mon 04/11/13	Tue 27/01/15	0%	97
99	Mincery Farm					
100	Design team procurement and briefing	27.5 mons	Wed 05/12/12	Mon 09/03/15	19%	
101	Establish design and survey support team	1.5 ws	Mon 10/12/12	Wed 19/12/12	100%	100%
102	Undertake a client brief from PF	1 mon	Wed 19/12/12	Wed 30/01/13	100%	101
103	Undertake a client brief from OCC	0 mons	Wed 30/01/13	Wed 30/01/13	100%	102
104	Design model units type floor plans (RIBA C)	3 ws	Wed 30/01/13	Wed 20/02/13	100%	101, 102, 103
105	Surveys	10.6 mons	Wed 05/12/12	Mon 14/10/13	66%	
106	TOPO survey	4 ws	Wed 05/12/12	Tue 15/01/13	100%	9
107	GROUND CONDITIONS: Undertake a desk top GIS/Map and previous use assessment of all the UTILITIES: Undertake utility searches and obtain feedback to the capacity and availability to and	4 ws	Wed 30/01/13	Tue 26/02/13	100%	106SS+2 ws
108	Flood Report	8 ws	Wed 05/12/12	Tue 12/02/13	100%	106SS
109	Transport Assessment	4 ws	Wed 30/01/13	Tue 26/02/13	100%	106FS+2 ws
110	Ecology Assessment	4 ws	Wed 30/01/13	Tue 26/02/13	100%	106FS+2 ws
111	Noise Assessment	6 ws	Wed 05/12/12	Tue 26/02/13	100%	106SS
112	Slow Worm removal	4 ws	Wed 30/01/13	Tue 26/02/13	100%	106FS+2 ws
113	Slow worm assessment & Strategy (Post Hibernation) - signed agreement to method statement	7 mons	Mon 01/04/13	Mon 14/10/13	25%	111
114	Trapping	7 ws	Mon 01/04/13	Mon 20/05/13	100%	111
115	Undertake clearance of ecology species	3 ws	Tue 27/05/13	Mon 10/06/13	0%	114
116	Consultations	70 days	Tue 11/06/13	Mon 16/09/13	0%	115
117	Planning consultation (1) - What will they need for planning?	1 mon	Tue 17/06/13	Mon 14/07/13	0%	11, 116
118	Highways consultation	0 mons	Wed 19/12/12	Wed 19/12/12	100%	101
119	Planning consultation (2)	0 mons	Tue 12/02/13	Tue 12/02/13	100%	106SS+2 ws, 119
120	Ward Councillor (1)	0 mons	Wed 20/02/13	Wed 20/02/13	100%	120SS
121	Ward Councillor (2)	0 mons	Wed 20/02/13	Wed 20/02/13	100%	104, 119
122	Residents Forum (1)	0 mons	Mon 22/04/13	Mon 104, 119	100%	104, 119
123	Residents Forum (2)	0 mons	Mon 22/04/13	Mon 22/04/13	100%	123, 128SS+3 ws
124	Public Exhibition (1)	0 mons	Sat 27/04/13	Sat 27/04/13	100%	124, 128
125	Consultation (1)	0 mons	Sat 27/04/13	Sat 27/04/13	100%	125, 128SS+3 ws
126	Design master plan	4.73 mons	Wed 30/01/13	Thu 30/06/13	25%	
127	Develop elevation treatment drawings (RIBA C)	16 ws	Fri 24/05/13	Wed 104, 122, 128FF, 128I	34%	104FF, 102
128	Design & Access Statement	6 ws	Wed 13/03/13	Fri 24/05/13	25%	128FF
129	Planning Statement	4.8 ws	Mon 15/04/13	Thu 30/05/13	17%	104, 122, 128FF, 128I
130	Create feasibility/outline design cost plan	2 ws	Fri 13/05/13	Thu 13/06/13	0%	130
131	Wrap up feasibility report	2 ws	Fri 13/05/13	Thu 13/06/13	0%	128, 129, 131FF
132	Submit planning application	0 ws	Thu 13/06/13	Thu 13/06/13	0%	132
133	Planning Approval Obtained	6.25 mons	Thu 05/12/13	Thu 05/12/13	0%	
134	Judicial Review	0 mons	Thu 13/06/13	Thu 13/06/13	0%	131, 114, 133
135	Consult with Allotment Association	0 mons	Thu 13/06/13	Thu 13/06/13	0%	135
136	Apply for Closure notice	1 wk	Fri 14/06/13	Thu 12/06/13	0%	135
137	Secretary of State approves	3 mons	Fri 13/06/13	Thu 05/12/13	0%	136
138	Obtain closure notice	0 mons	Fri 13/06/13	Thu 05/12/13	0%	137
139	Tender - Belt on	4.25 mons	Fri 13/06/13	Thu 20/01/14	0%	
140	Brief contractor	1 wk	Mon 12/08/13	Thu 05/12/13	0%	137
141	Tender works packages	1 wk	Mon 12/08/13	Thu 12/12/13	0%	140
142	Tender assessment	3 ws	Mon 19/08/13	Fri 27/08/13	0%	145
143	Project Board approval to proceed GO / NO GO	0 mons	Mon 30/09/13	Fri 18/10/13	0%	146
144	Award contract	3 ws	Mon 30/09/13	Fri 08/11/13	0%	147
145	Enabling (site prep) works	18.25 mons	Fri 15/11/13	Thu 05/12/13	0%	149FF
146	Contractor Design Development	8 ws	Fri 13/09/13	Thu 07/11/13	0%	137
147	Planning pre-commencement conditions	8 ws	Fri 13/09/13	Thu 07/11/13	0%	137
148	Mobilisation	4 ws	Fri 13/12/13	Thu 23/01/14	0%	149FF, 150FF, 158FF
149	Enabling (site prep) works	4 ws	Fri 24/01/14	Thu 20/02/14	0%	154, 117, 153, 149FF
150	Infrastructure	2 mons	Fri 21/02/14	Mon 21/04/14	0%	155, 154
151	Construction (possible alternative subject to Contractor)	12 mons	Fri 21/03/14	Mon 09/03/15	0%	
152	Batch of semi-sectional completion - 15 units	9 mons	Fri 21/03/14	Mon 01/12/14	0%	156SS+1 mon
153	Batch of semi-sectional completion - 15 units	9 mons	Tue 20/05/14	Mon 09/02/15	0%	156SS+2 mons

Project: OCC Programme schedule_2
 Date: Thu 16/05/13

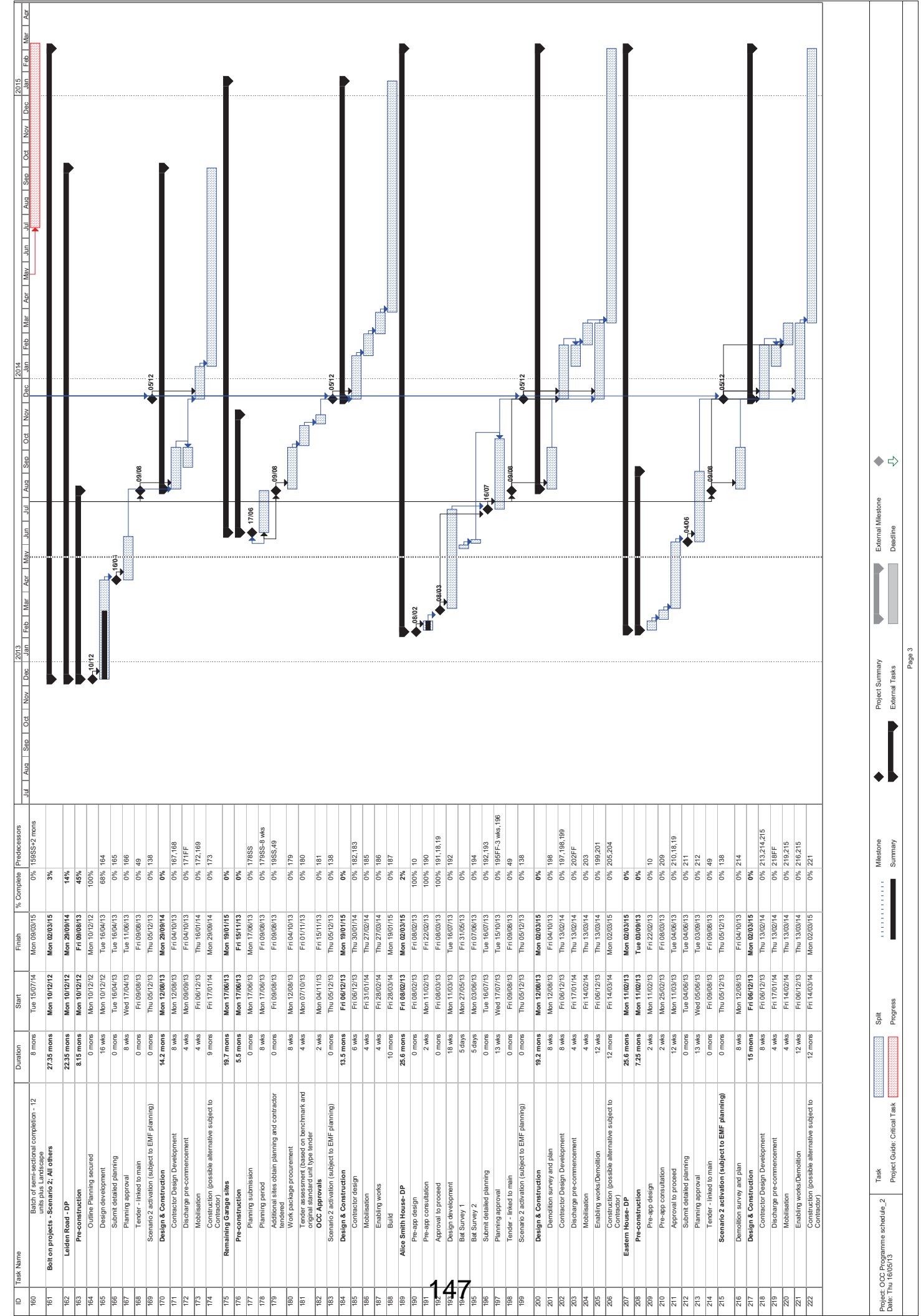
Task: Project Guide: Critical Task

Milestone: Summary

External Milestone: Deadline

Project Summary: External Tasks

Page 2



External Milestone
 Deadline
 Project Summary
 External Tasks
 Milestone
 Summary
 Split
 Progress

147

This page is intentionally left blank